

Missouri Department of Natural Resources

## Total Maximum Daily Load Information Sheet

### River des Peres

---

#### Waterbody Segment at a Glance:

<b>County:</b>	St. Louis
<b>Nearby Cities:</b>	St. Louis
<b>Length of impairment:</b>	Unclassified stream
<b>Pollutant:</b>	Low Dissolved Oxygen
<b>Source:</b>	Urban Nonpoint Source



**TMDL Priority Ranking:** Medium

---

#### Description of the Problem

##### Beneficial uses of the River des Peres

- The affected portion of River des Peres is not classified so no beneficial uses are assigned to it; however, all waterbodies in Missouri are protected by the general criteria (standards) contained in Missouri's Water Quality Standards (WQS), 10 CSR 20-7.031.

##### Use that is impaired

- None, since no beneficial uses can be assigned

##### Standards that apply

- All waterbodies in Missouri are protected by the general criteria (standards) contained in Missouri's Water Quality Standards (WQS), 10 CSR20-7.031(3). These criteria are also called narrative criteria, since they do not contain specific numerical limits. For River des Peres, points (3)(D) and (G) apply:
  - Waters shall be free from substances or conditions in sufficient amounts to result in toxicity to human, animal or aquatic life
  - Waters shall be free from physical, chemical or hydrologic changes that would impair the natural biological community.

##### Background Information and Water Quality Data

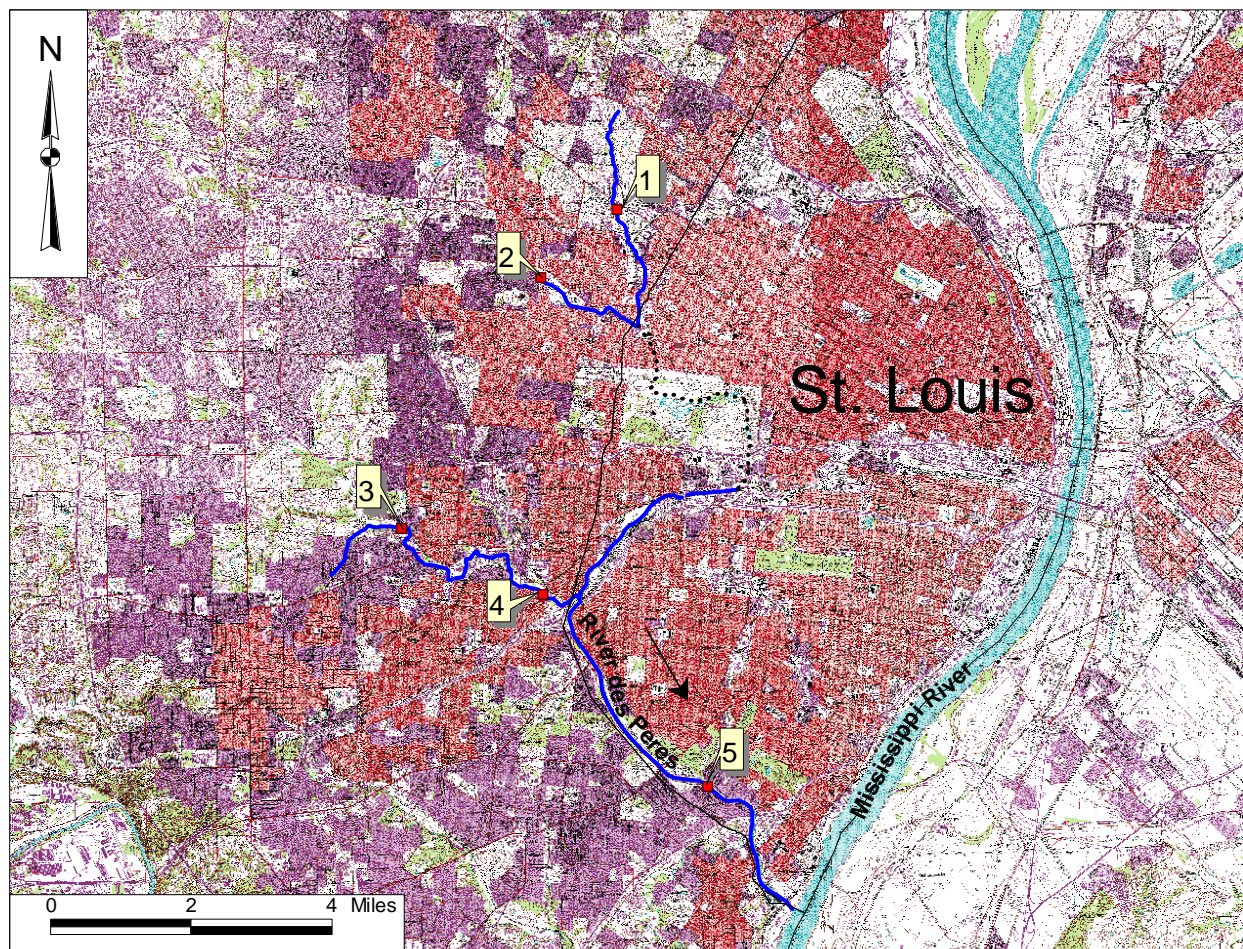
For most of its length, the River des Peres is a cement stormwater ditch, channelized (straightened and deepened) to remove runoff as quickly as possible from its 114 square-mile watershed into the Mississippi River. The watershed includes the city of St. Louis and 42 St. Louis County municipalities. The U.S. Environmental Protection Agency (EPA) placed River des Peres on the 2002 303(d) list for low dissolved oxygen (DO). Although a source is given, urban nonpoint

source, a length for the impairment was not supplied. EPA based this listing on U.S. Geological Survey (USGS) and Stream Team 1437 data collected in the unclassified portion of the river. A stream is unclassified if it only flows during storm events and does not maintain pools that would support aquatic life. That data showed five exceedences of the State's DO criterion derived from the USGS data and seven DO exceedences (out of 20 samples each) collected by Stream Team 1437 from 1997 through 2002. This number of exceedences is above the 10 percent allowable per Missouri's 303(d) Listing Methodology. However, the sites monitored are located in the section of the river that is not classified; therefore, the numeric standards for aquatic life do not apply. The classified section where the standard applies (the downstream-most 2.5 miles of the river) is approximately 12 miles downstream from the USGS sampling site.

A map of the area and table of the data may be found below. Note the high bacteria counts (FC and Ecoli). They are much higher than the state standard of 200 colonies per 100 milligrams of water, but again, statutes and laws do not provide a way for the river to be listed for this pollutant. That is because the Beneficial Use of Whole Body Contact (swimming) is not presently assigned to the river, and a waterbody must have this use for the state WQS for bacteria to apply. While the levels of bacteria in the data table below are not "officially exceedences" of WQS, they do represent conditions unsafe for those swimming or wading.

It is worth noting that a waterbody does not have to be on the 303(d) list to be restored, though this could help attract funds and certainly attracts attention. There are currently groups of local citizens and businesses working together to improve the river. One such group is the River des Peres Watershed Coalition. This local stakeholder involvement is critical to the success of any river, stream or lake improvement project.

## River des Peres in St. Louis County, Missouri, Showing Sampling Sites



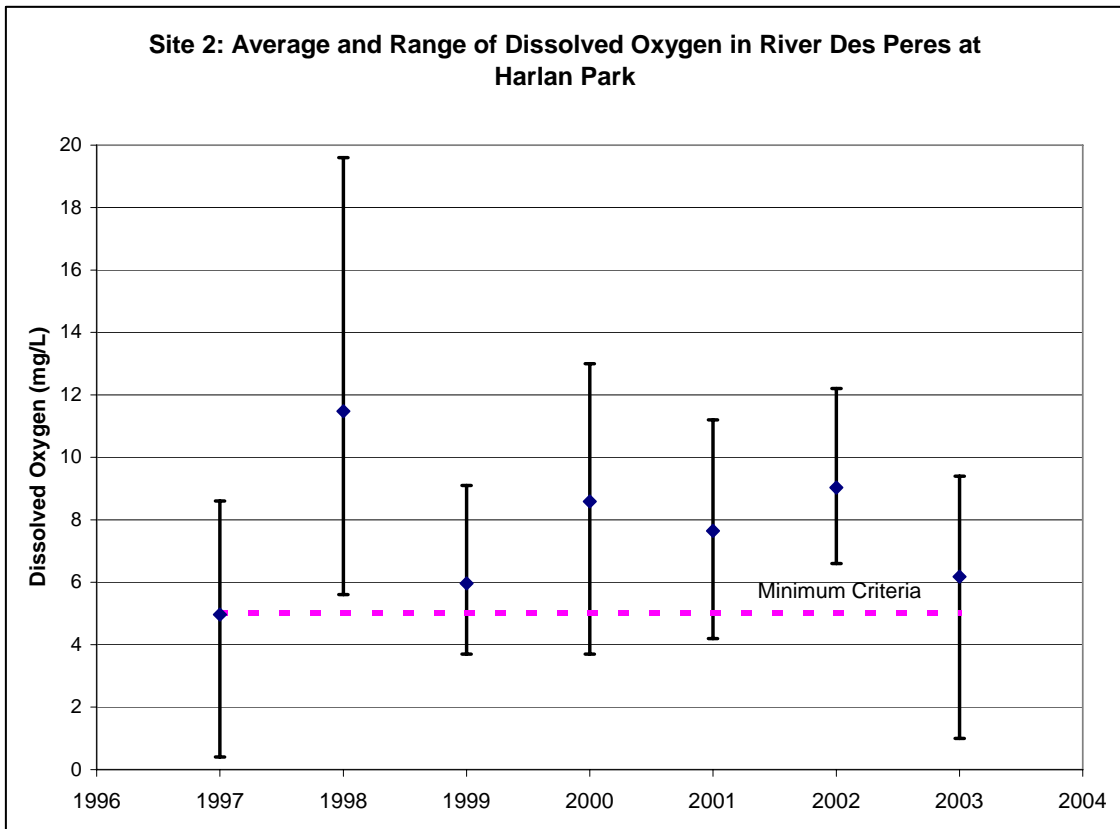
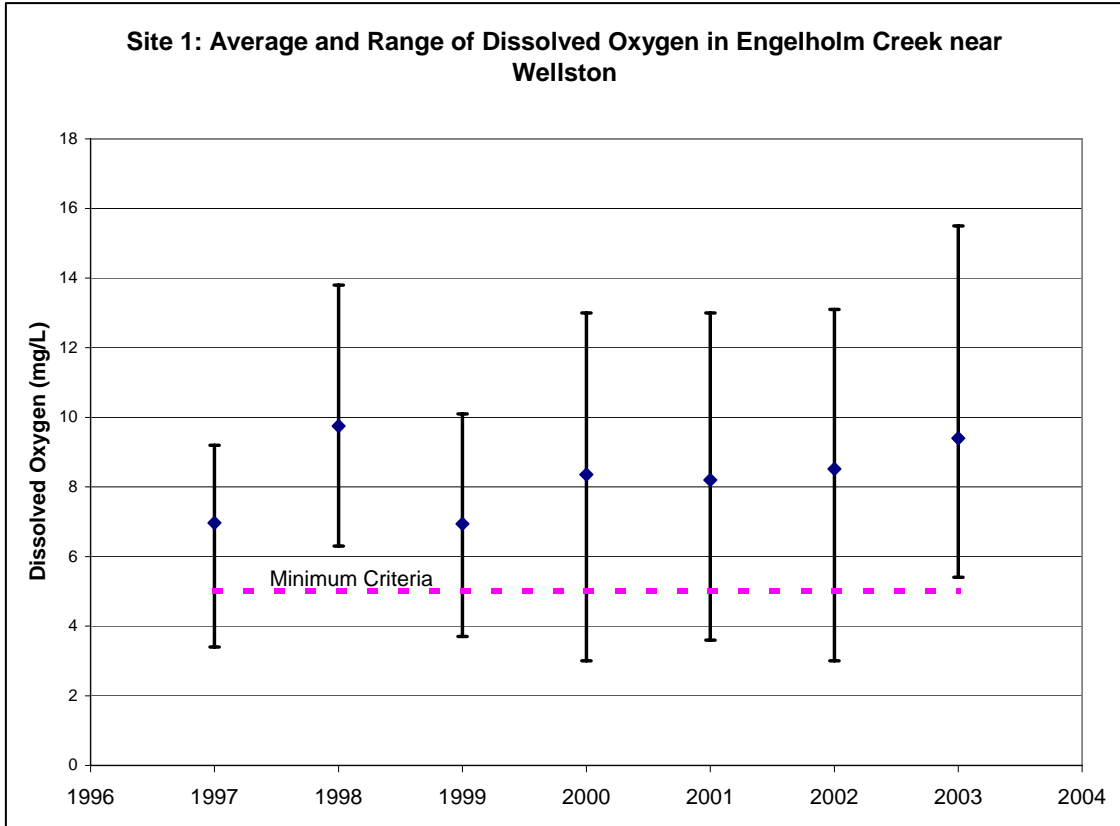
..... Underground Portion      ———> Direction of flow

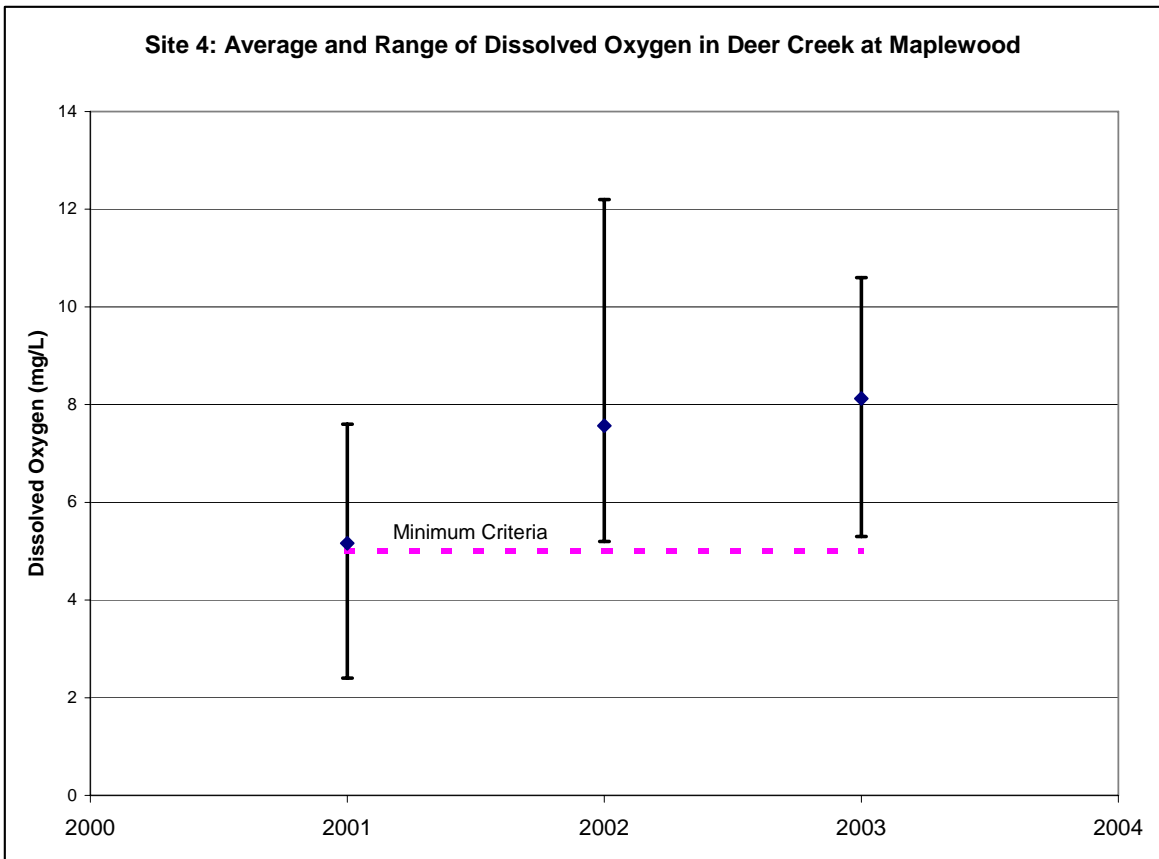
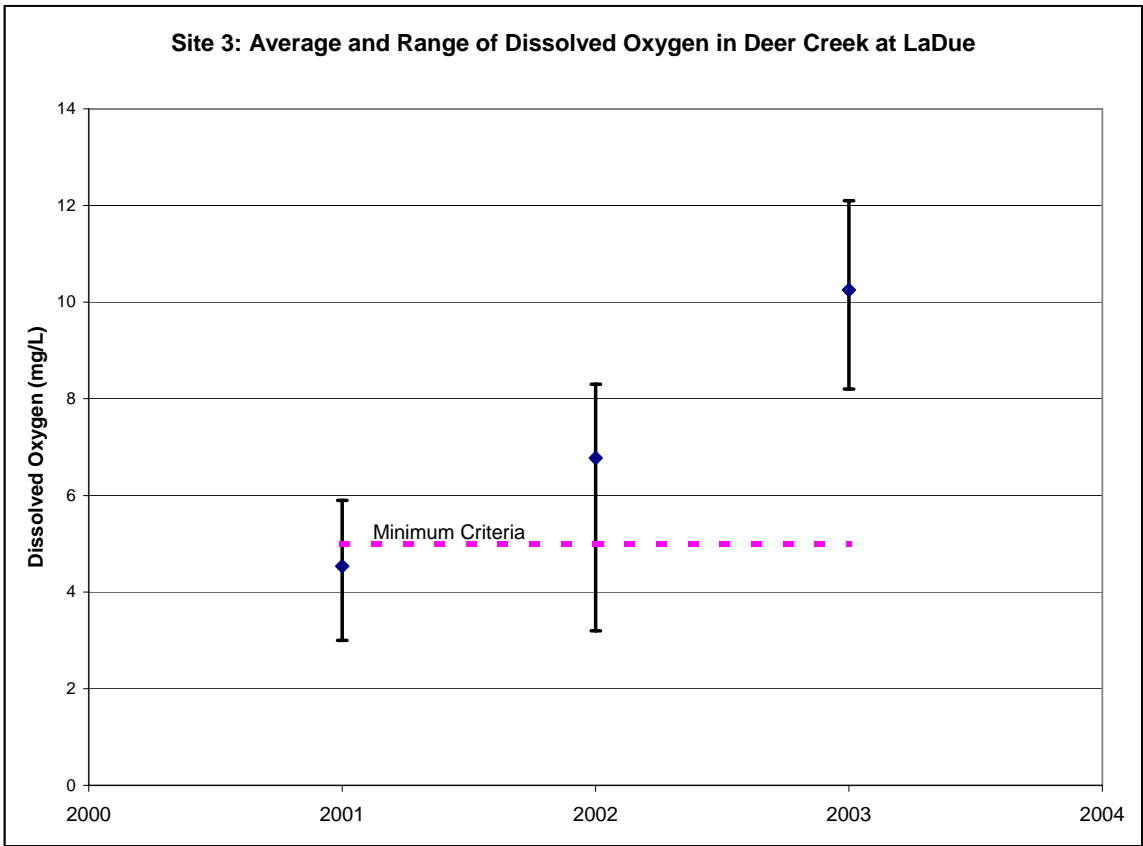
### Site Index

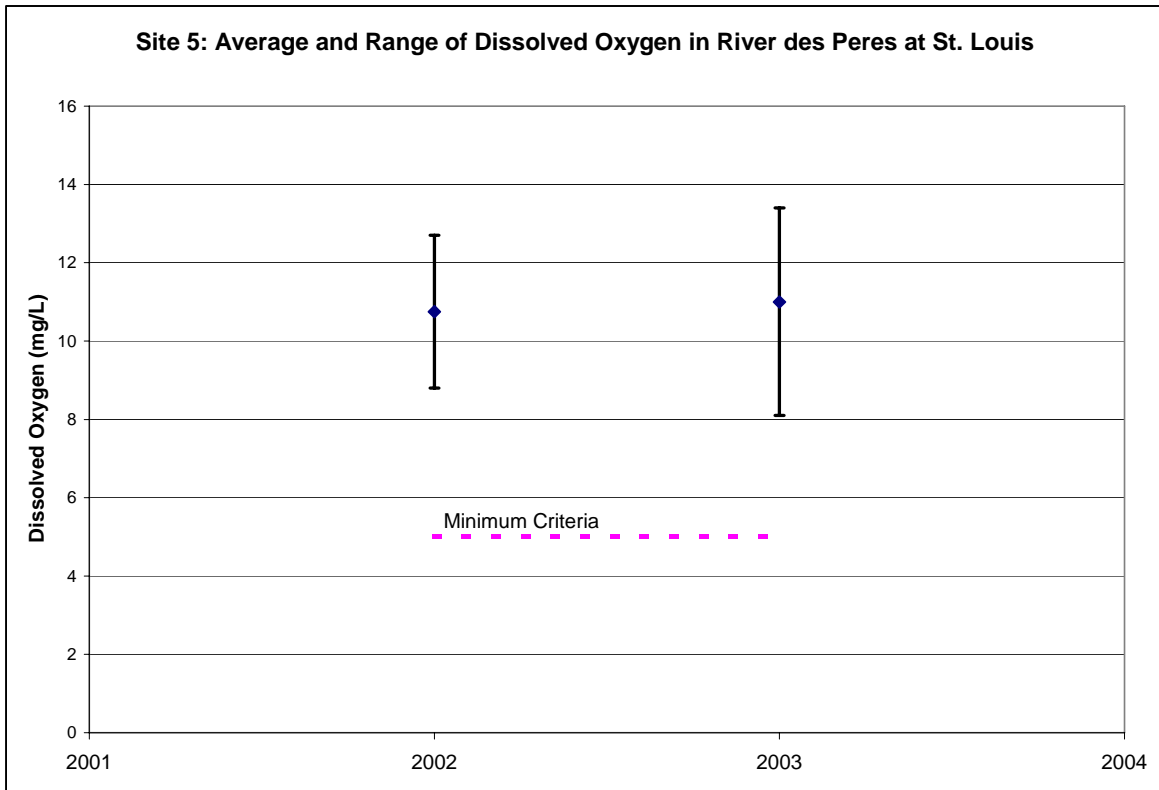
- 1- Engleholm Creek near Wellston
- 2- River des Peres at Harlan Park
- 3- Deer Creek at LaDue
- 4- Deer Creek at Maplewood
- 5- River des Peres at St. Louis

In the graphs below, vertical bars indicate the range of the samples taken in that year, from the lowest value to the highest value. The dark diamond on the range bar is the average for that year at that site. “Minimum criteria” is Missouri’s dissolved oxygen water quality standard of 5.0 mg/L

# River des Peres Data







**For more information call or write:**

Missouri Department of Natural Resources

Water Protection Program

P.O. Box 176, Jefferson City, MO 65102-0176

1-800-361-4827 or (573) 751-1300 office

(573) 522-9920 fax

Program Home Page: [www.dnr.mo.gov/env/wpp/index.html](http://www.dnr.mo.gov/env/wpp/index.html)